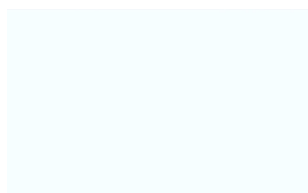


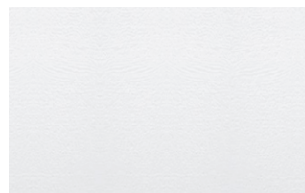
## BARVA LAMEL



05 - RAL 9003  
signální bílá



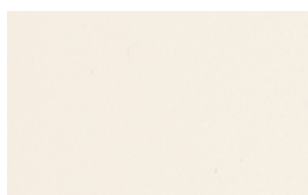
01 - RAL 9010  
čistá bílá



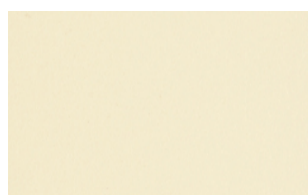
71 - RAL 9016  
dopravní bílá



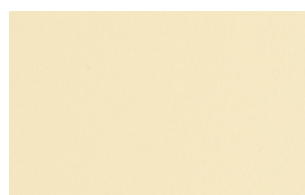
64 - RAL 7035  
světle šedá



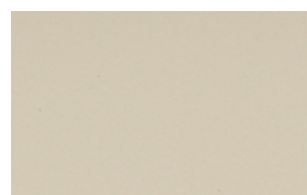
65 - RAL 9001  
krémová



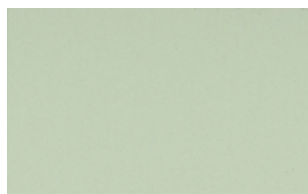
89 - RAL 1013  
perlová bílá



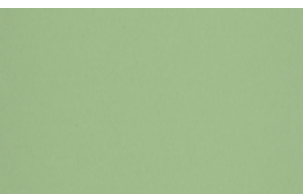
26 - 1015  
slonová kost



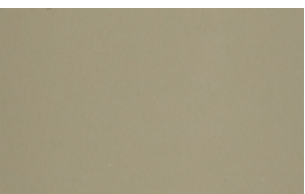
04 - 7038  
achátová šedá



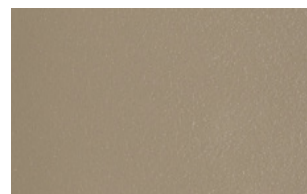
56 - Chartwell green



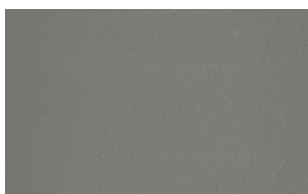
58 - RAL 6021  
bledě zelená



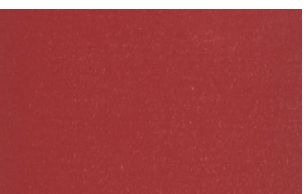
40 - RAL 7023  
betonová šedá



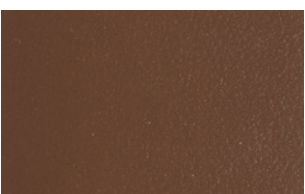
29 - RAL 7039  
křemenová šedá



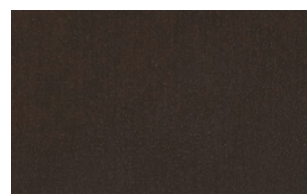
48 - RAL 7012  
čedičová šedá



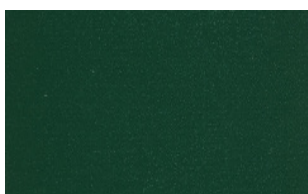
52 - RAL 3004  
ohnivě červená



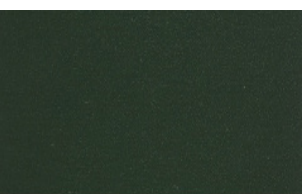
88 - RAL 8014  
sépiově hnědá



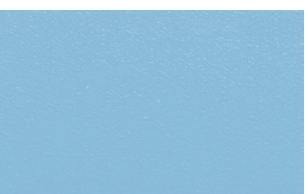
02 - RAL 8019  
šedohnědá



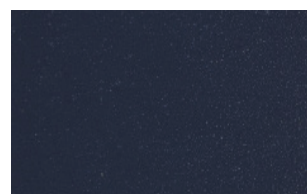
51 - RAL 6005  
mechová zelená



55 - RAL 6009  
jedlová zelená



59 - RAL 5024  
pastelová modrá



66 - RAL 5011  
ocelová modrá

## BARVA LAMEL



67 - RAL 7016  
antracitová šedá

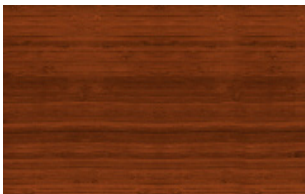


27 - RAL 7021  
černošedá

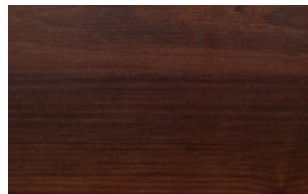


10 - RAL 9005  
černá

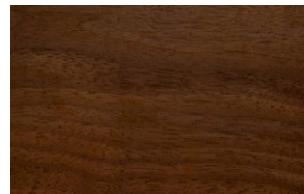
## DŘEVĚNÉ VZORY



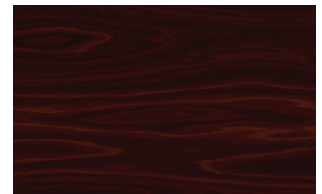
09 Teak



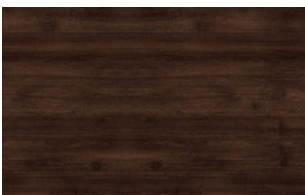
12 Rosewood



16 Nut brown



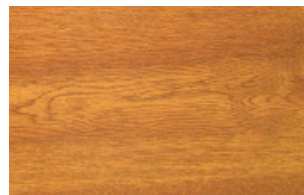
17 Mahagon



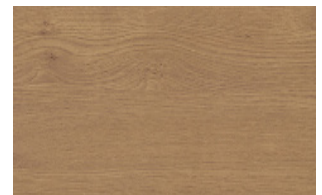
19 Dark oak



20 - Clear oak



38 - Golden oak



36 - Irish oak



39 - Winchester

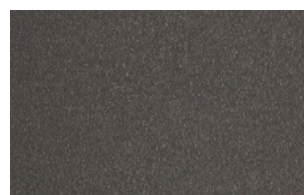
## METALICKÉ BARVY



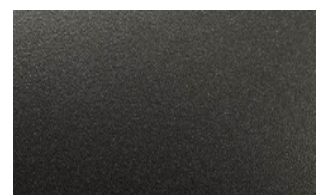
03 - 9006  
bílý hliník



23 - RAL 9007  
šedý hliník



84 - Sand black  
černý písek



58 - DB 703  
železitá slída